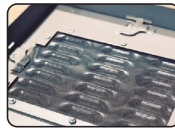
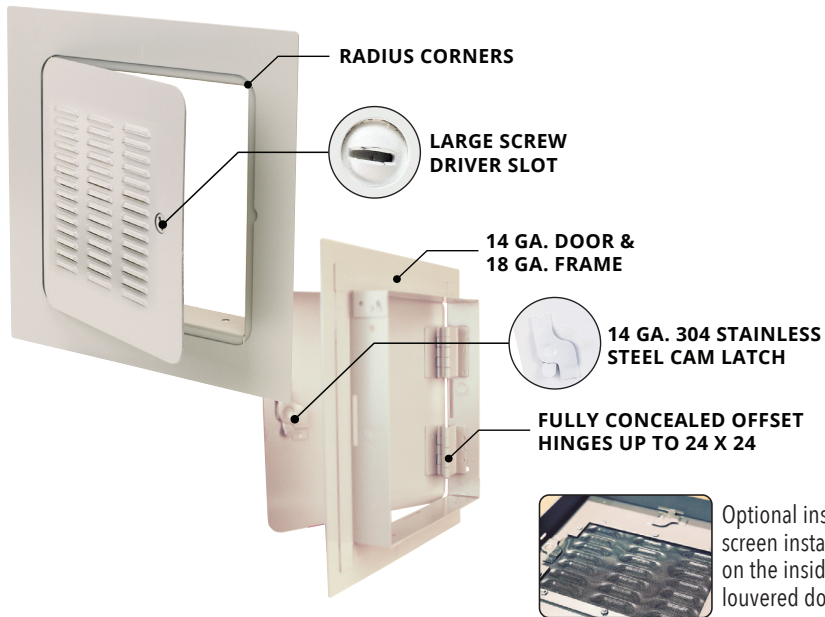
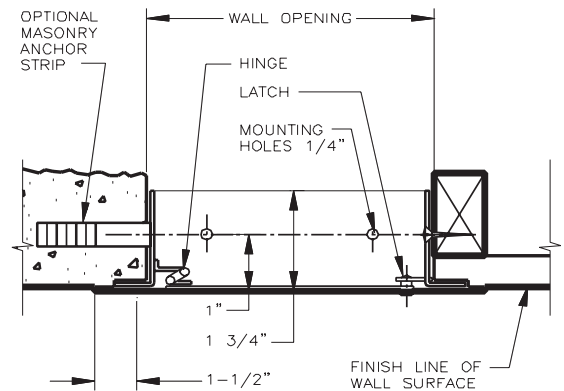


# SUPREME LVR 3100

## FOR WALLS & CEILINGS



Optional inset screen installed on the inside of louvered doors.



## PRODUCT DETAILS

### CONSTRUCTION

**Door and Trim:** 14 ga. steel door and 16 ga. steel frame. Laser cut cold rolled steel, no corner mitering, preferred by architects and building professionals.

**Finish:** Primed white baked enamel, paintable surface.

**Hinge:** Fully concealed offset hinges (up to 24" x 24") allows 165 degrees (over 24" x 24" is semi concealed allowing 180°) for a wider open work area.

**Lock:** 14 ga. 304 stainless steel cam latches with large screwdriver slot for easy opening.

Can be installed in the ceiling or wall.

### DURABILITY

This Supreme precision flush access door for wall and ceiling installation promotes air flow and temperature control with louvered options.



SEE BACK OF SHEET FOR PRODUCT SIZES AND OPTIONS ▶

## PRODUCT SIZES

### SUPREME LVR 3100

X	Model Number	Door Size W x H	Wall Opening	Cam Latches	Ship Wt. Lbs.
	Supreme LVR 3100	6 x 6	6 1/4 x 6 1/4	1	4
	Supreme LVR 3100	8 x 8	8 1/4 x 8 1/4	1	5
	Supreme LVR 3100	8 x 12*	8 1/4 x 12 1/4	1	6
	Supreme LVR 3100	8 x 16**	8 1/4 x 16 1/4	1	8
	Supreme LVR 3100	10 x 10	10 1/4 x 10 1/4	3	6
	Supreme LVR 3100	12 x 12	12 1/4 x 12 1/4	3	8
	Supreme LVR 3100	12 x 16*	12 1/4 x 16 1/4	3	10
	Supreme LVR 3100	12 x 18*	12 1/4 x 18 1/4	3	11
	Supreme LVR 3100	12 x 24*	12 1/4 x 24 1/4	4	15
	Supreme LVR 3100	14 x 14	14 1/4 x 14 1/4	3	10
	Supreme LVR 3100	14 x 24*	14 1/4 x 24 1/4	3	14
	Supreme LVR 3100	16 x 16	16 1/4 x 16 1/4	3	13
	Supreme LVR 3100	16 x 20*	16 1/4 x 20 1/4	3	16
	Supreme LVR 3100	16 x 24**	16 1/4 x 24 1/4	4	17
	Supreme LVR 3100	18 x 18	18 1/4 x 18 1/4	3	14
	Supreme LVR 3100	18 x 24	18 1/4 x 24 1/4	4	18
	Supreme LVR 3100	18 x 36**	18 1/4 x 36 1/4	5	29

X	Model Number	Door Size W x H	Wall Opening	Cam Latches	Ship Wt. Lbs.
	Supreme LVR 3100	20 x 20	20 1/4 x 20 1/4	3	17
	Supreme LVR 3100	20 x 24	20 1/4 x 24 1/4	4	21
	Supreme LVR 3100	20 x 30*	20 1/4 x 30 1/4	4	23
	Supreme LVR 3100	22 x 22	22 1/4 x 22 1/4	4	22
	Supreme LVR 3100	22 x 24*	22 1/4 x 24 1/4	4	23
	Supreme LVR 3100	22 x 30	22 1/4 x 30 1/4	4	25
	Supreme LVR 3100	22 x 36*	22 1/4 x 36 1/4	5	32
	Supreme LVR 3100	24 x 24	24 1/4 x 24 1/4	4	24
	Supreme LVR 3100	24 x 30*	24 1/4 x 30 1/4	4	27
	Supreme LVR 3100	24 x 36*	24 1/4 x 36 1/4	5	35
	Supreme LVR 3100	24 x 48*	24 1/4 x 48 1/4	6	43
	Supreme LVR 3100	30 x 30	30 1/4 x 30 1/4	6	32
	Supreme LVR 3100	30 x 36	30 1/4 x 36 1/4	6	39
	Supreme LVR 3100	32 x 32	32 1/4 x 32 1/4	6	35
	Supreme LVR 3100	36 x 36	36 1/4 x 36 1/4	7	44
	Supreme LVR 3100	36 x 48	36 1/4 x 48 1/4	8	57
	Supreme LVR 3100	48 x 48	48 1/4 x 48 1/4	12	70

\*Sizes Available Upon Request

\*\*Special Orders

## OPTIONS

### Finishes:

- Stainless Steel Type 304 No. 4 Satin Finish Brushed
- Stainless Steel Type 316 No. 4 Satin Finish Brushed

### Locks:

- Mortise Lock/Other
- Key Cylinder Locks: Keyed alike 2 keys per door

### Louver & Screen Options:

- 1/4 Louvers
- 1/2 Louvers
- Full Louvers (Default)
- Insect Screen

**Custom Size:** \_\_\_\_\_

Project: _____	Date: _____
Contractor: _____	Architect: _____
Sizes: _____	Quantity: _____ App Initials: _____