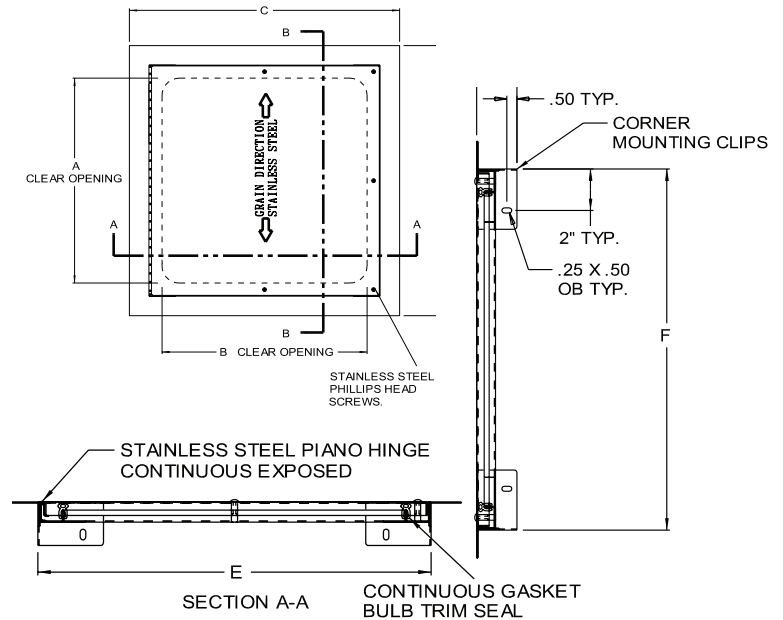


WAT EXTERIOR WATER/AIR TIGHT

FOR WALLS & CEILINGS



PRODUCT DETAILS

CONSTRUCTION

Door and Trim: 16 ga. steel door and frame. Laser cut cold rolled steel, no corner mitering.

Finish: 5 stage iron phosphate with prime coat of white alkyd baking enamel, paintable surface.

Hinge: Continuous exposed stainless steel piano hinge air infiltration: less than 0.01 cfm/sq foot ASTM E 283.

Water Penetration: No leakage at 15.05 psf ASTM E.

Gasket: Continuous bulb trim gasket.

Can be installed in the ceiling or wall.

DURABILITY

The LINHDOR WAT is a flush access door that has been tested for air infiltration and water penetration. The door and frame are fully welded and gasketed. This access door is ideal for use in laboratories, clean rooms, operating rooms, etc. where an airtight/watertight seal is required.



SEE BACK OF SHEET FOR PRODUCT SIZES AND OPTIONS ▶

PRODUCT SIZES

WAT EXTERIOR WATER/AIR TIGHT

X	Model Number	Door Size W x H	Wall Opening	Ship Wt. Lbs.
	LINHDOR WAT	12 x 12	12 3/8 x 12 3/8	8
	LINHDOR WAT	14 x 14	14 3/8 x 14 3/8	12
	LINHDOR WAT	18 x 18	18 3/8 x 18 3/8	15
	LINHDOR WAT	24 x 24	24 3/8 x 24 3/8	22
	LINHDOR WAT	30 x 30	30 3/8 x 30 3/8	32
	LINHDOR WAT	30 x 48	30 3/8 x 48 3/8	44

OPTIONS

Finishes:
 Stainless Steel Type 304 No. 4 Satin Finish Brushed

Locks:
 Stainless Steel allen head screws

 Stainless Steel philips head screws

Color: _____

Custom Size: _____

Project: _____ **Date:** _____

Contractor: _____ **Architect:** _____

Sizes: _____ **Quantity:** _____ **App Initials:** _____