

TITAN MS 100 MEDIUM SECURITY

FOR WALLS & CEILINGS



SEMI CONCEALED PIANO HINGE

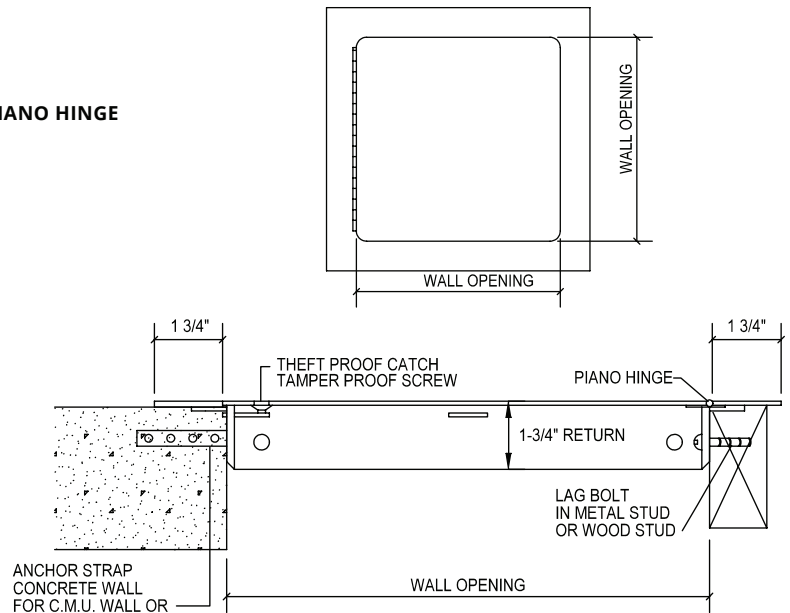
OPENS 180°

TAMPER PROOF
SNAKE EYE SCREWS



A special snake eye screw driver is required to open this door

12 GA. STEEL DOOR
16 GA. STEEL TRIM



PRODUCT DETAILS

CONSTRUCTION

Door: 12 ga. steel. Trim: .16 ga. steel.

Finish: Primed white baked enamel, paintable surface.

Hinge: Semi concealed piano hinge. Allows opening to 180.

Lock: Counter sunk tamperproof screws.

Anchors: Heavy steel, welded to frame.

Can be installed in the ceiling or wall.

DURABILITY

This door assures medium security whenever it is necessary under institutional conditions. Most detention buildings and mental care facilities require access to vital services in or behind walls, shafts, and stairwells.



SEE BACK OF SHEET FOR PRODUCT SIZES AND OPTIONS ►

PRODUCT SIZES

TITAN MS 100 MEDIUM SECURITY

X	Model Number	Door Size W x H	Wall Opening	Tamper Proof Screws	Ship Wt. Lbs.
	TITAN MS 100	12 x 12	12 1/4 x 12 1/4	3	22
	TITAN MS 100	16 x 16	16 1/4 x 16 1/4	3	31
	TITAN MS 100	18 x 18	18 1/4 x 18 1/4	3	36
	TITAN MS 100	24 x 24	24 1/4 x 24 1/4	4	52
	TITAN MS 100	24 x 36	24 1/4 x 36 1/4	4	73
	TITAN MS 100	36 x 36	36 1/4 x 36 1/4	5	103

OPTIONS

Finishes:

- Stainless Steel Type 304 No. 4 Satin Finish Brushed
- Stainless Steel Type 316 No. 4 Satin Finish Brushed

Locks:

- Mortise Lock/Other
- Key Cylinder Locks: Keyed alike 2 keys per door

Gasket:

- Weather resistive neoprene gasket all 4 sides
 Closed cell sponge, blend of neoprene, EPDM, SBR
 Meets ASTM D 1056: SCE 41, RE 41, 2A1: substrate UL 94HF 1 recognized

Other:

- Linhdor 23 Snake Eye Screw Driver

Custom Size: _____

Project: _____	Date: _____
Contractor: _____	Architect: _____
Sizes: _____	Quantity: _____ App Initials: _____