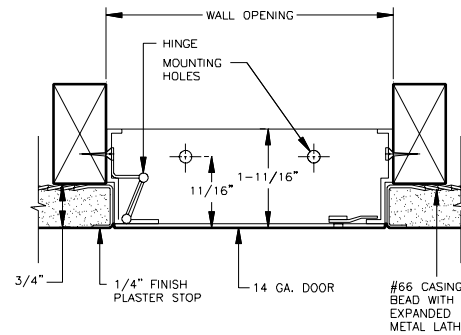
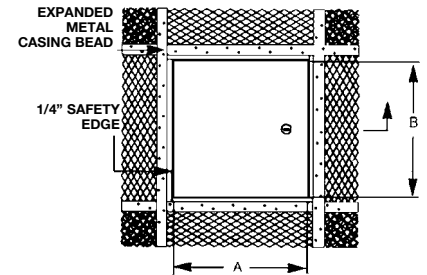
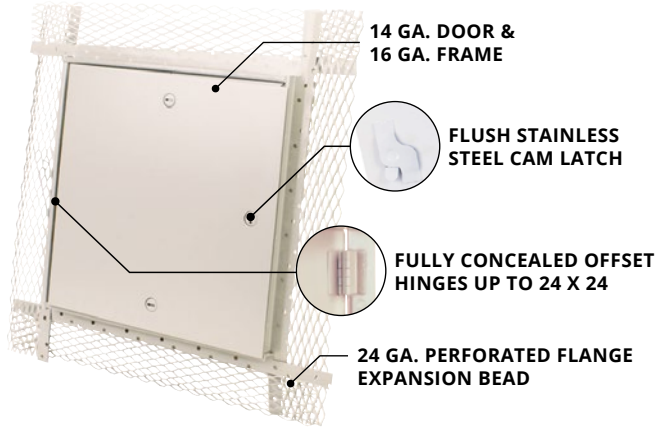


# PB 900 FOR PLASTER

## FOR WALLS & CEILING



**\*\* Galvannealed steel:** The preferred coated steel for use in architectural applications.

- Coated in zinc, heated to over 1000° F so iron is pulled from steel.
- Iron mixes with zinc coating, making it harder, more scratch-resistant, uniform in appearance.
- Galvannealed steel bonds better with paint, and better for welding.

## PRODUCT DETAILS

### CONSTRUCTION

**Door:** 14 ga. steel door. Laser cut cold rolled steel, no corner mitering.

**Trim:** 16 ga. steel, 3" wide expanded 24 ga. galvanized plaster flange. The space from the expanded flange to the 1/4" safety edge of the door will accommodate 3/4" of plaster.

**Finish:** Primed white baked enamel, paintable surface.

**Hinge:** Concealed offset hinge on sizes up to and including 24" x 24". Semi-concealed hinge on sizes over 24" x 24".

**Latch:** Flush, stainless steel cam latch.

Can be installed in the walls and ceilings.

### DURABILITY

The PB 900 door is designed for application in all plaster walls and ceilings. The 1/4" safety edge gives the door a strong frame and prevents the plaster from being chipped under normal use.



SEE BACK OF SHEET FOR PRODUCT SIZES AND OPTIONS ▶

## PRODUCT SIZES

### PB 900 FOR PLASTIC

X	Model Number	Door Size W x H	Wall Opening	Cam Latches	Ship Wt. Lbs.
	PB 900	8 x 8	8 1/4 x 8 1/4	1	4
	PB 900	10 x 10	10 1/4 x 10 1/4	1	5
	PB 900	12 x 12	12 1/4 x 12 1/4	3	7
	PB 900	12 x 24	12 1/4 x 24 1/4	2	12
	PB 900	14 x 14	14 1/4 x 14 1/4	3	9
	PB 900	16 x 16	16 1/4 x 16 1/4	3	11
	PB 900	18 x 18	18 1/4 x 18 1/4	3	12
	PB 900	20 x 20	20 1/4 x 20 1/4	3	15
	PB 900	22 x 22	22 1/4 x 22 1/4	4	18
	PB 900	22 x 30	22 1/4 x 30 1/4	4	24
	PB 900	22 x 36	22 1/4 x 36 1/4	5	27
	PB 900	24 x 24	24 1/4 x 24 1/4	4	20
	PB 900	24 x 36	24 1/4 x 36 1/4	5	27
	PB 900	24 x 48**	24 1/4 x 48 1/4	6	37
	PB 900	30 x 30**	30 1/4 x 30 1/4	5	29
	PB 900	30 x 36**	30 1/4 x 36 1/4	5	31
	PB 900	36 x 36**	36 1/4 x 36 1/4	7	42

\*Sizes Available Upon Request

\*\* Special Orders

## OPTIONS

### Finishes:

- Stainless Steel Type 304 No. 4 Satin Finish Brushed
- Stainless Steel Type 316 No. 4 Satin Finish Brushed

### Locks:

- Cylinder lock: 2 keys per door, keyed alike

### Gasket:

- Weather resistive neoprene gasket all 3 sides  
 Closed cell sponge, blend of Neoprene/EPDM/SBR  
 Meets ASTM D 1056/ SCE 41, RE 41, 2A1/ substrate UL 94HF 1 recognized

Custom Size: \_\_\_\_\_

Project: _____	Date: _____
Contractor: _____	Architect: _____
Sizes: _____	Quantity: _____ App Initials: _____